

Research Plan - Evaluating a German learning disorders platform using the RE-AIM framework

Lior Weinreich¹, Gido Metz², Björn Witzel¹, Olga Drobina¹, Paula Dümig¹, Gerd Schulte-Körne¹, Kristina Moll¹

¹Ludwig-Maximilians-University of Munich (Germany) | Department of Child and Adolescent Psychiatry, Psychosomatics and Psychotherapy

²Maastricht University (Netherlands) | Department of Health Promotion

Background

- The study aims to evaluate LONDI, a German online platform dedicated to learning disorders.

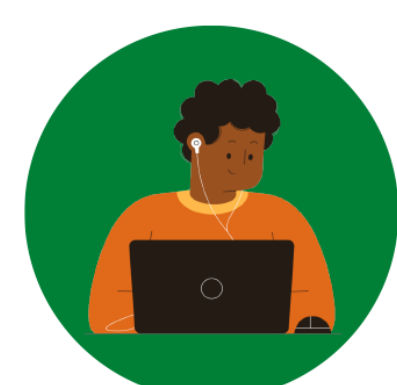


- LONDI provides scientifically proven information about specific learning difficulties in reading, spelling and mathematics. This information is customized for five different user groups: parents, learning therapists, teachers, school psychologists, social workers.
- LONDI also includes a help system for professionals, which offers recommendations for suitable diagnostic instruments and interventions tailored to each child's deficit profile.
- The present evaluation study is based on the RE-AIM framework, often used for evaluating public health interventions.
- Specifically, we will examine the following RE-AIM dimensions: **Reach, Adoption, Implementation and Maintenance.**

Research questions



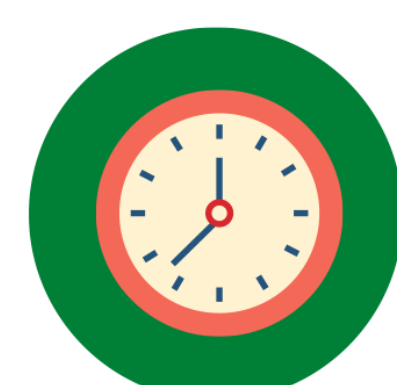
1. Reach:
How many learning therapists does LONDI reach?



2. Adoption:
Do learning therapists intend to keep using the help system and why?



3. Implementation:
In what manner do learning therapists implement the platform?



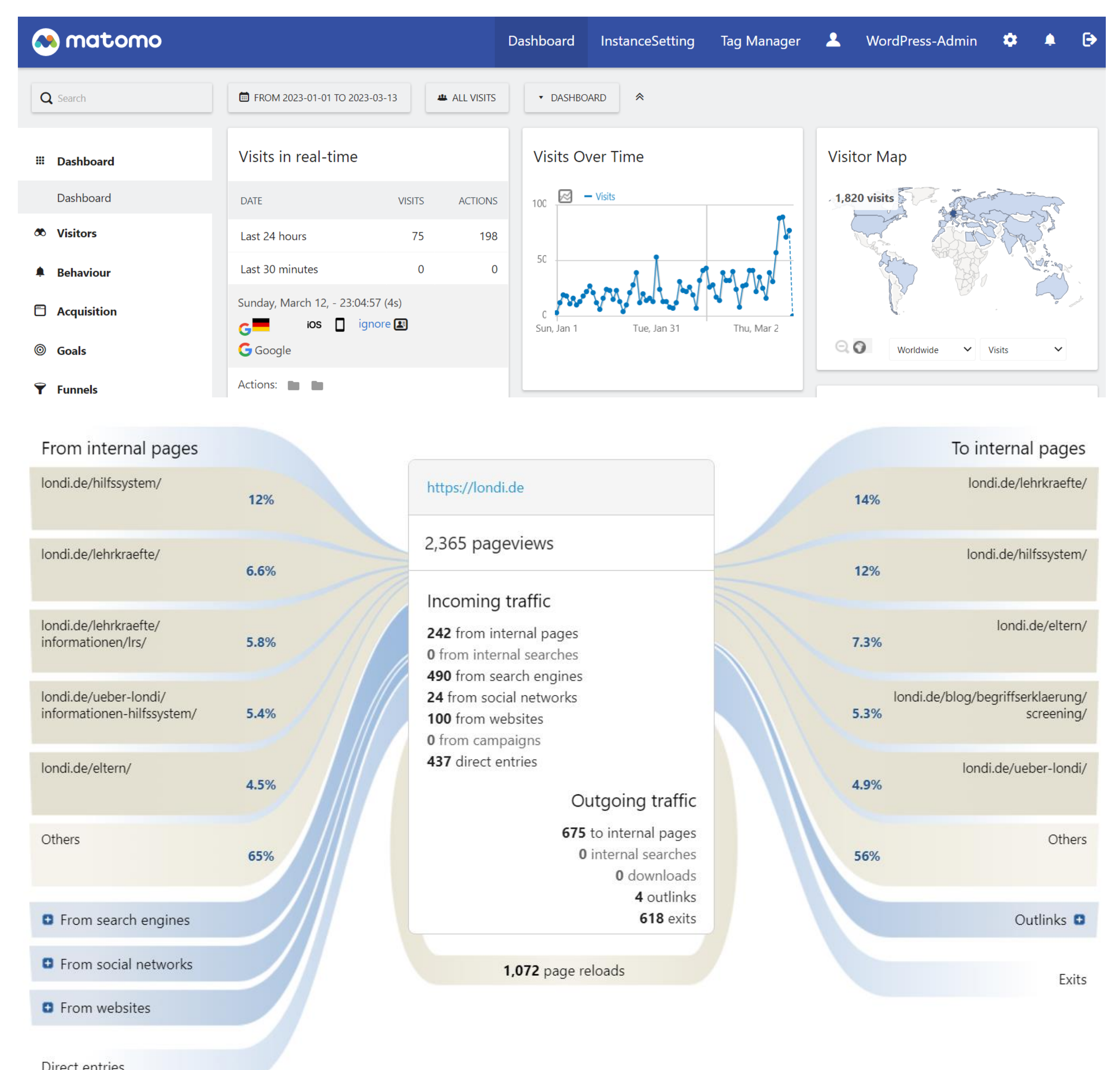
4. Maintenance:
Does therapist content usage change over time?

Research gap & aim:

- The expected results will be the basis for further improvement and optimization of the platform.
- The results will suggest whether according to the used RE-AIM dimensions, LONDI offers an adequate support system for learning therapists treating children with developmental learning disorders.

Methods

- Reach:** Demographic pop-up measuring profession
- Adoption:** Help system pop-up measuring intention to use, and hedonic & pragmatic qualities (via UEQ-S)
- Implementation:** Matomo analytics software comparing the help system's intended use vs. actual use
- Maintenance:** Matomo analytics software comparing usage within 6 months (first 3 vs. last 3 months)



Screen shots from the Matomo Analytics software

Planned analyses

- Reach:**
 - Comparing the percentage of learning therapists using LONDI with their percentage in the German population
- Adoption:**
 - Mean: for intention to use + hedonic & pragmatic qualities
 - CFA: for hedonic & pragmatic qualities
 - MLR: is intention predicted by hedonic & pragmatic qualities?
- Implementation:**
 - Analyzing the usage in the learning therapists pages
 - Analyzing the help system usage (e.g., bounce rates)
- Maintenance:**
 - Comparing usage in different time periods

Email for related correspondence

Lior.weinreich@med.uni-muenchen.de.